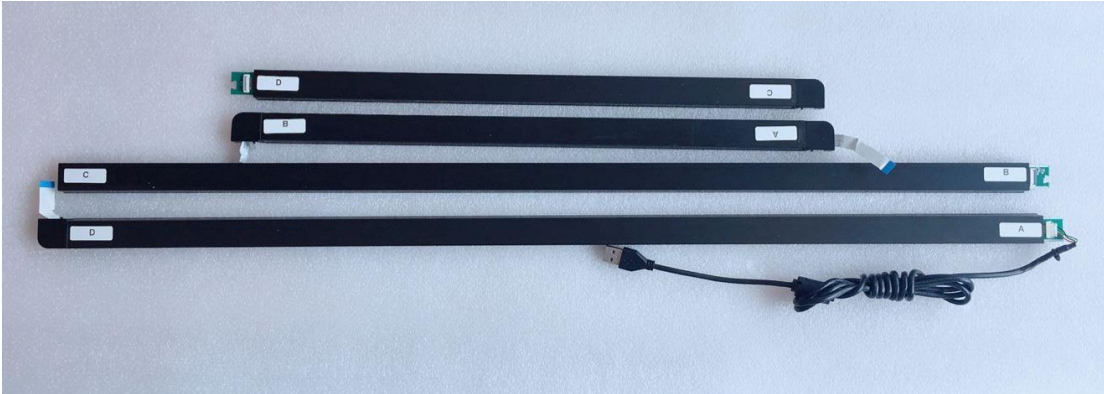
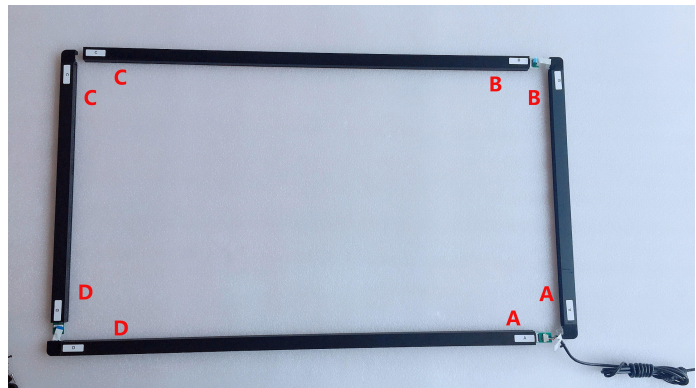
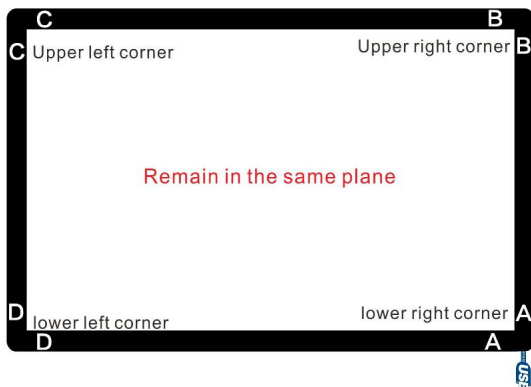


touch screen installation manual (FY series)

一、 when you open the packing box.you will see 4 Aluminum alloy frames:



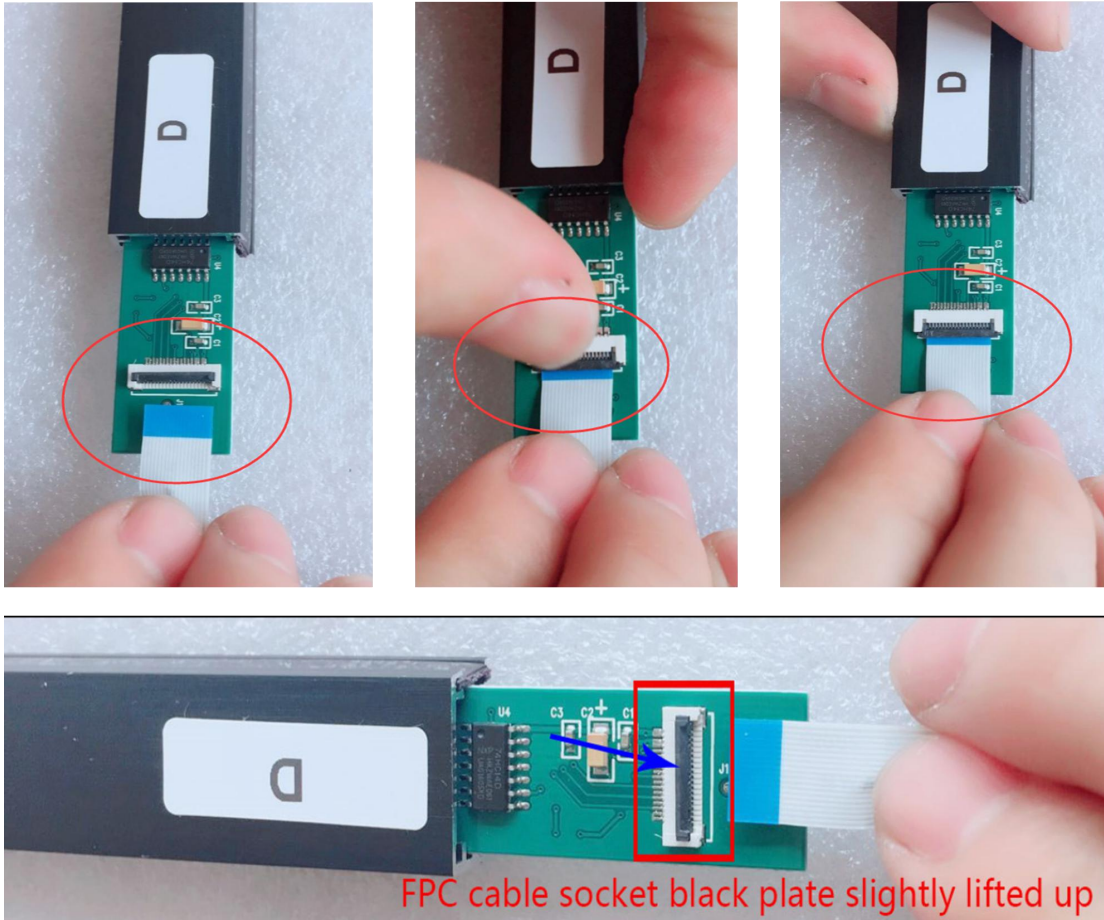
二、 See this Installation Diagram. A connects to A; B connects to B; C connects to C; D connects to D. Sample:



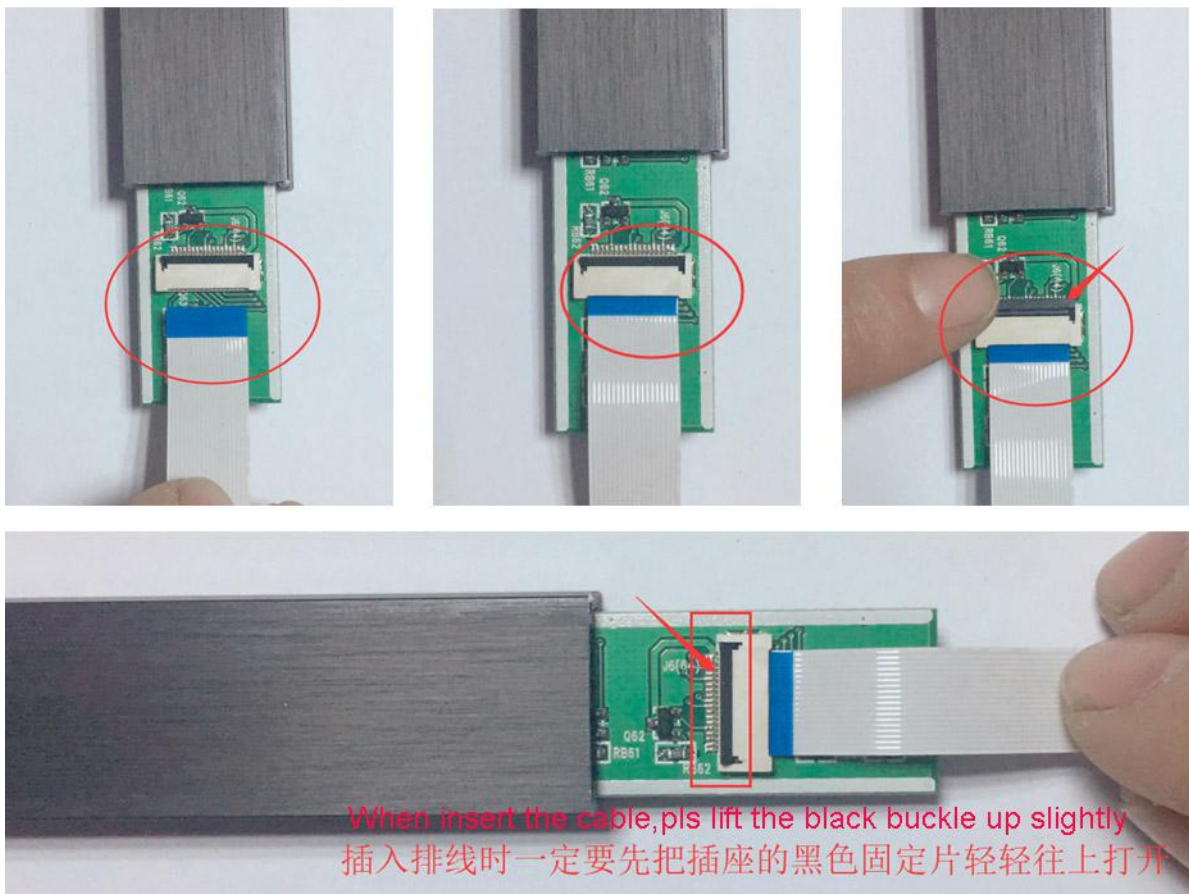
三、 At the corner of AD, lift the black buckle up for the connector in the A side.(Please don't too hard, is damaged easily). Pick up the AB side, Insert the A-side FPC cable(blue face is up)into the AD side FPC connector, and lock the buckle . The FPC cable unfold ,easy to break. when connect well ,be careful to push the PCB into the frame. As showed photos:

PS: The following two kinds of seats are delivered at random. Please select and install them according to the figure below.

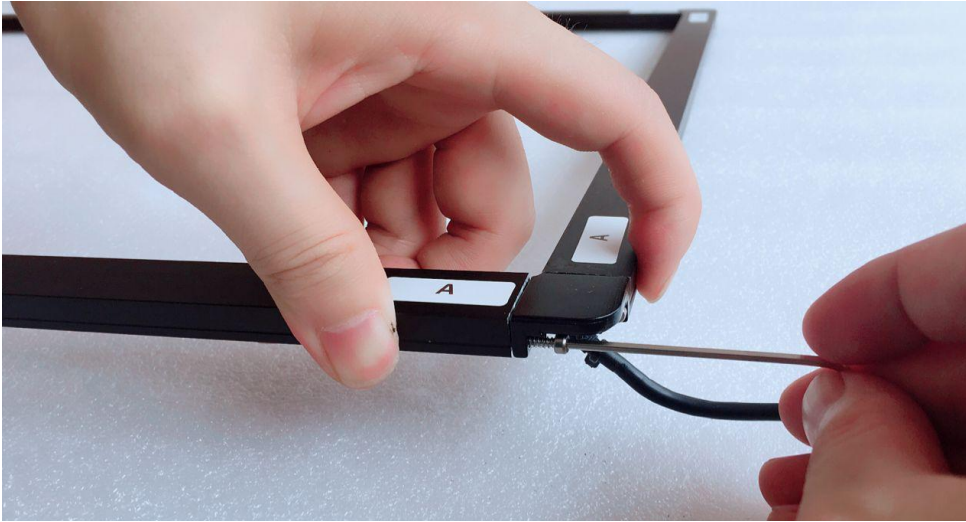
① The First kind:



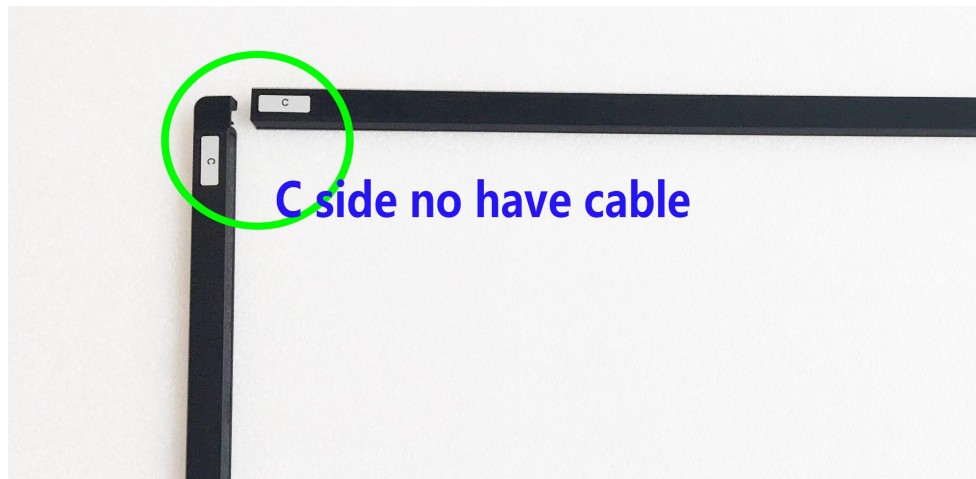
② The second:



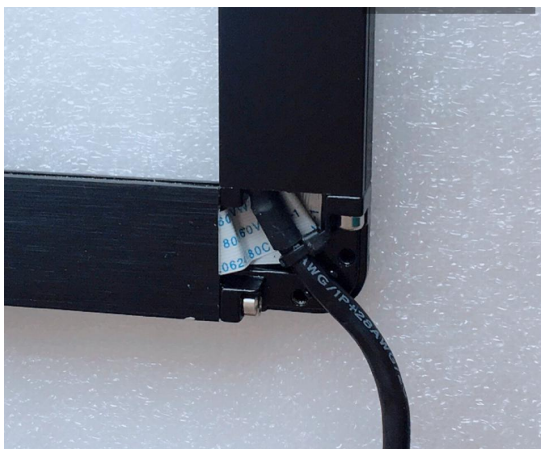
5、connections with other adjacent side. Tighten the screws fixed Angle parts.



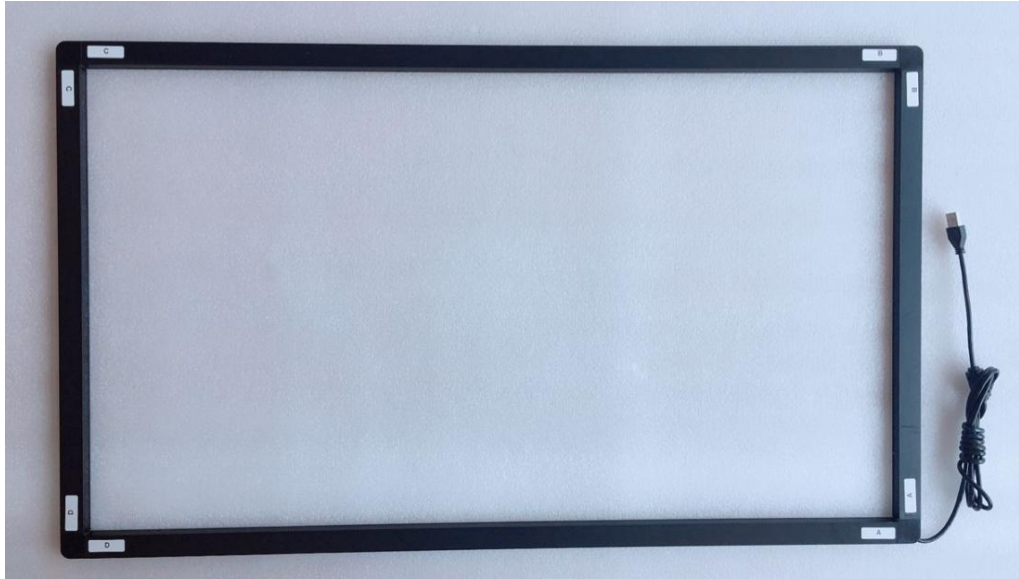
6、The same way to Installed other three sides(B、C、D).★**Note: C side no have cable ,NO need connect**



7、Take the touchscreen on the back to the desktop, and take the cable and wiring into the slot. Tighten the screws fixed the cover.



8、 Connect the touch screen USB to computer,that overlay to turn Monitor into touch



NOTE: The front of the touchscreen is label A、 B、 C、 D

Thank you for your support of our Products.